



"Dissemination of Education for Knowledge, Science and Culture."
- Shikshanmaharshi Dr. Bapuji Salunkhe



SHRI SWAMI VIVEKANAND SHIKSHAN SANSTHA'S VIVEKANAND COLLEGE, KOLHAPUR (EMPOWERED AUTONOMOUS)

2130, 'E' Ward, Tarabai Park,
Tal. Karveer, Dist. Kolhapur - 416 003.
Affiliated to Shivaji University, Kolhapur (M.S.)

NAAC Reaccredited : "A" (CGPA - 3.24 in 3rd Cycle)
College with Potential Excellence by U.G.C., New Delhi
"Star College" by D.B.T. Govt. of India
ISO 9001 : 2015

Ph. : 0231-2658612 | Fax : 0231-2658840 | Resi.: 0231-2653962 | Website : www.vivekanandcollege.ac.in | E-mail : info@vivekanandcollege.org

Founder
Dr. Bapuji Salunkhe
D.Lit.

President
Hon. Chandrakant Dada Patil
Higher and Technical Education Minister, Maharashtra

Chairman
Prin. Abhaykumar Salunkhe
M.A.

Secretary
Prin. Mrs. Shubhangi Gawade
M.Sc., B.Ed.

Principal
Dr. R. R. Kumbhar
M.Sc., M.Phil., Ph.D.

Criterion IV – Infrastructure and Learning Resources

4.3.1: Institution frequently updates its IT facilities





"Dissemination of Education for Knowledge, Science and Culture."
- Shikshanmaharshi Dr. Bapuji Salunkhe



SHRI SWAMI VIVEKANAND SHIKSHAN SANSTHA'S

VIVEKANAND COLLEGE, KOLHAPUR (EMPOWERED AUTONOMOUS)

2130, 'E' Ward, Tarabai Park,
Tal. Karveer, Dist. Kolhapur - 416 003.
Affiliated to Shivaji University, Kolhapur (M.S.)

NAAC Reaccredited : "A" (CGPA - 3.24 in 3rd Cycle)
College with Potential Excellence by U.G.C., New Delhi
"Star College" by D.B.T. Govt. of India
ISO 9001 : 2015

Ph. : 0231-2658612 | Fax : 0231-2658840 | Resl.: 0231-2653962 | Website : www.vivekanandcollege.ac.in | E-mail : info@vivekanandcollege.org

Founder
Dr. Bapuji Salunkhe
D.Lit.

President
Hon. Chandrakant Dada Patil
Higher and Technical Education Minister, Maharashtra

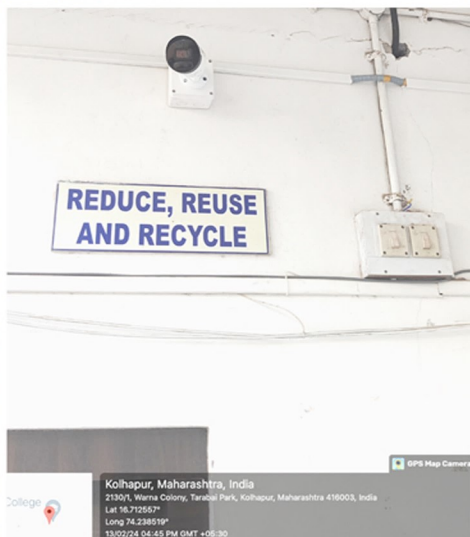
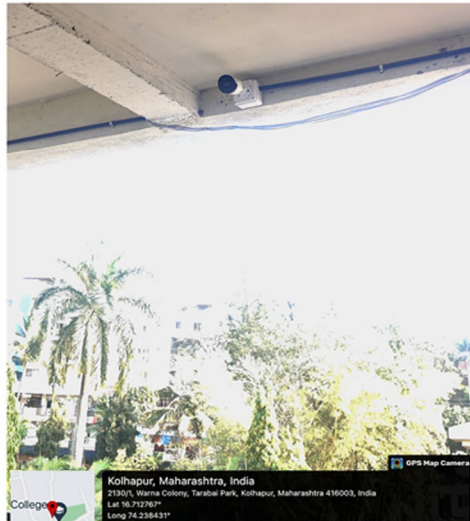
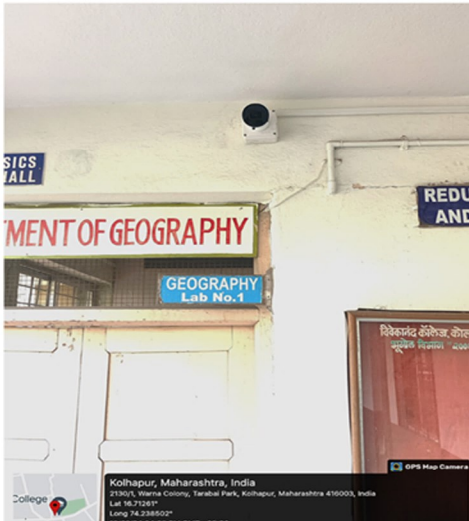
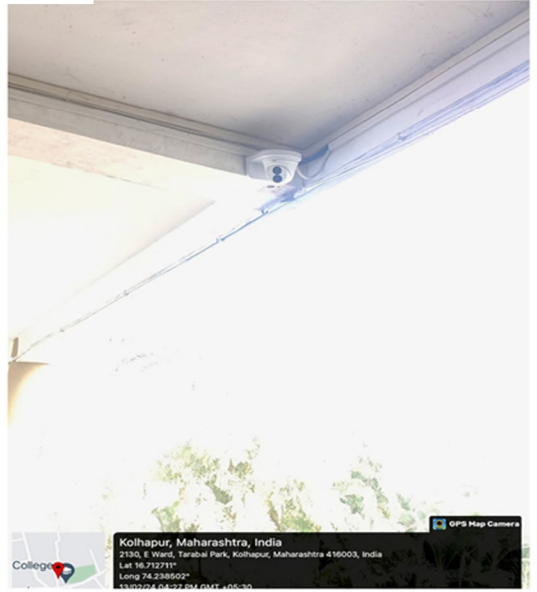
Chairman
Prin. Abhaykumar Salunkhe
M.A.

Secretary
Prin. Mrs. Shubhangi Gawade
M.Sc., B.Ed.

Principal
Dr. R. R. Kumbhar
M.Sc., M.Phil., Ph.D.

Criterion IV – Infrastructure and Learning Resources

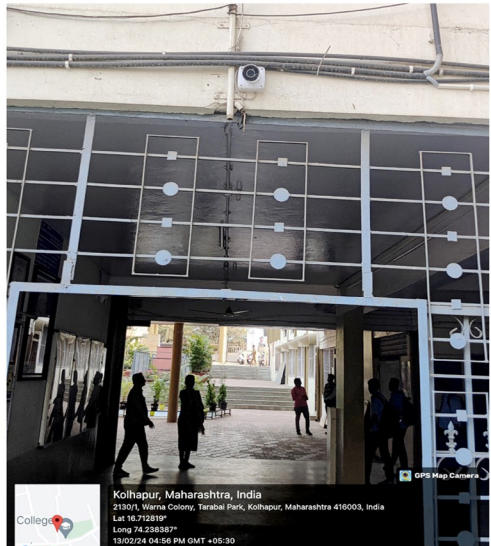
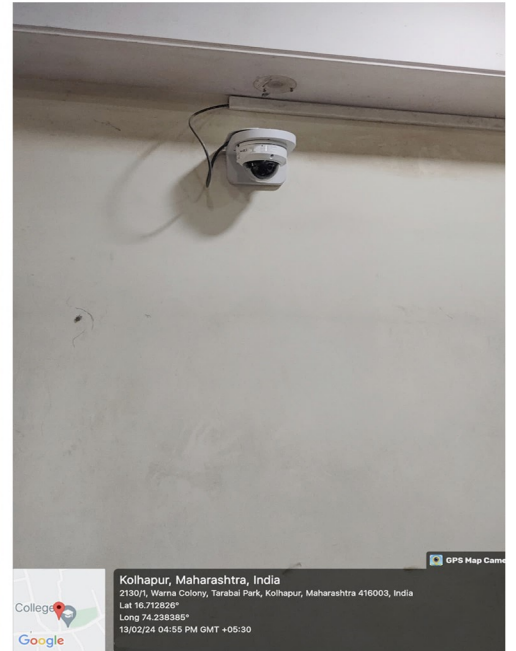
IP Camera in College campus (CCTV)



Criterion IV – Infrastructure and Learning Resources

4.3.1: Institution frequently updates its IT facilities and provides sufficient bandwidth for internet connection.

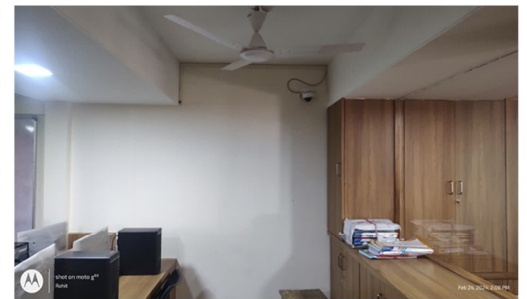
IP Camera in College campus (CCTV)



Criterion IV – Infrastructure and Learning Resources

4.3.1: Institution frequently updates its IT facilities and provides sufficient bandwidth for internet connection.

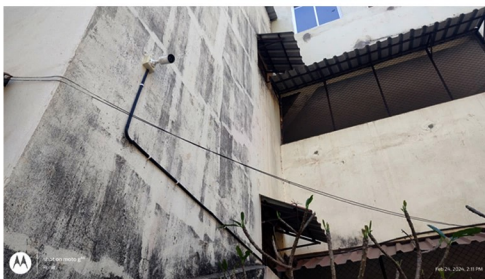
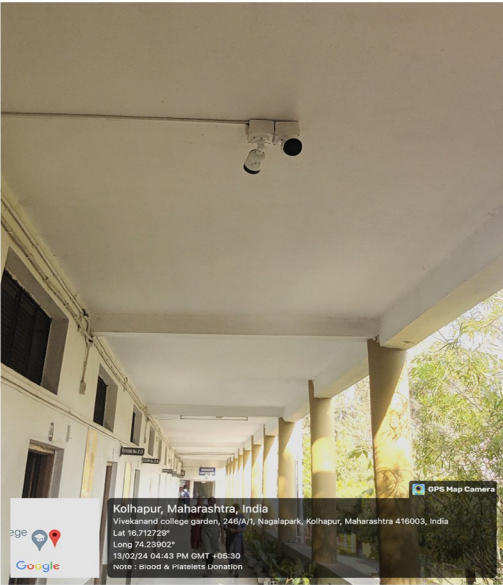
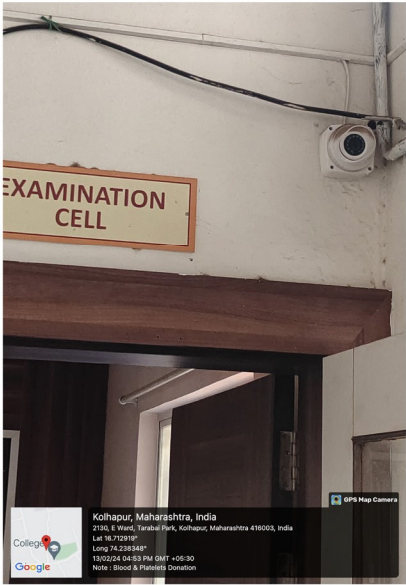
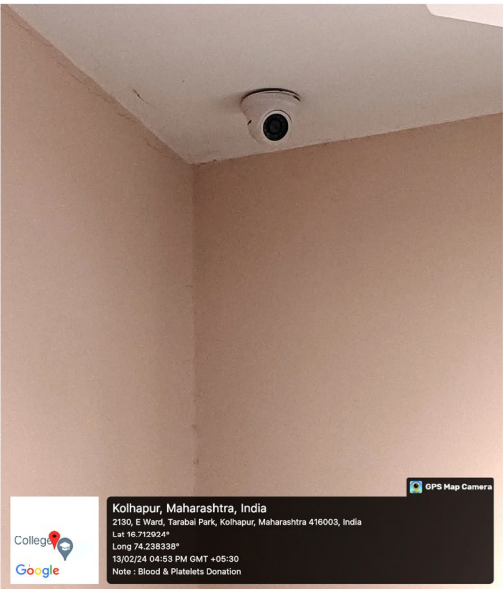
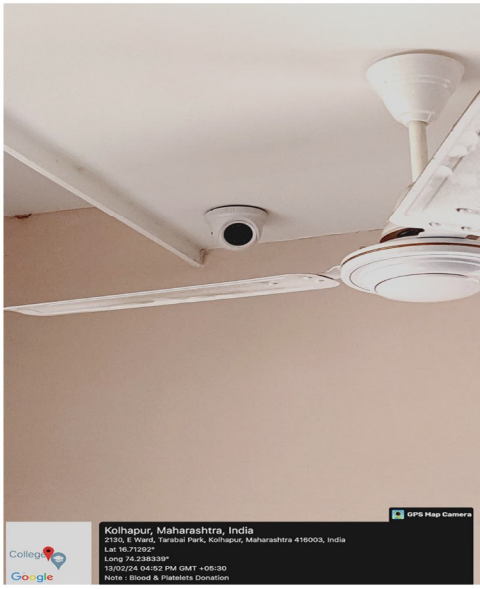
IP Camera in College campus (CCTV)



Criterion IV – Infrastructure and Learning Resources

4.3.1: Institution frequently updates its IT facilities and provides sufficient bandwidth for internet connection.

IP Camera in College campus (CCTV)



Criterion IV – Infrastructure and Learning Resources

4.3.1: Institution frequently updates its IT facilities and provides sufficient bandwidth for internet connection.

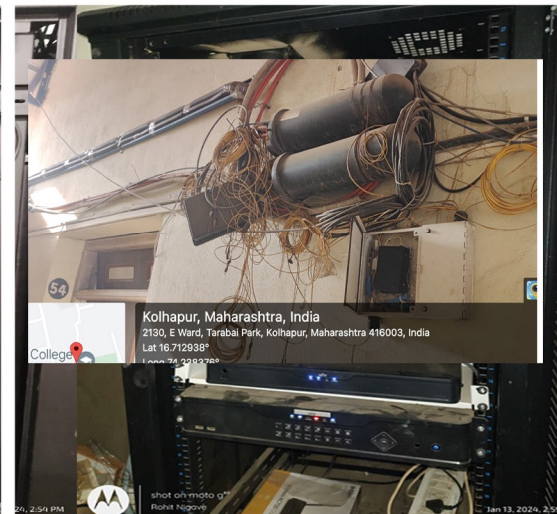
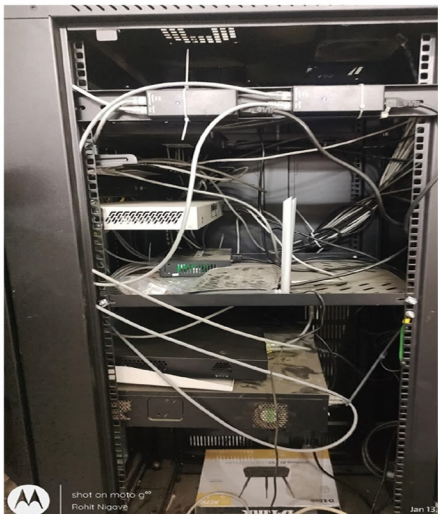
IP Camera in College campus (CCTV) Footage



Criterion IV – Infrastructure and Learning Resources

4.3.1: Institution frequently updates its IT facilities and provides sufficient bandwidth for internet connection.

Internet Rack



Criterion IV – Infrastructure and Learning Resources

4.3.1: Institution frequently updates its IT facilities and provides sufficient bandwidth for internet connection.

Wi-Fi Router (Access Point)



Criterion IV – Infrastructure and Learning Resources

4.3.1: Institution frequently updates its IT facilities and provides sufficient bandwidth for internet connection.

UPS backup



Criterion IV – Infrastructure and Learning Resources

4.3.1: Institution frequently updates its IT facilities and provides sufficient bandwidth for internet connection.

Interactive flat panel 65" and Digital Borad

