

**A**  
**PROJECT REPORT**  
**ON**

= **“ULPE DAIRY ”**

**Submitted To,**

SHIVAJI UNIVERSITY, KOLHAPUR

For Partial Fulfillment of the Degree

**“Bachelor of Computer Application”BCA-III (Sem VI)**

**Submitted By**

Miss. Namrata .A. Warke

Miss. Yugandhara .R. Ingawale

**UNDER THE GUIDANCE OF**

**Mrs. Megha Patil**

**Through,**

**VIVEKANAND COLLEGE, KOLHAPUR**

2020-2021



## CERTIFICATE

This is to certify that,

Miss. Namrata .A. Warke

Miss.Yugandhara .R. Ingawale

B.C.A-III (SEM-VI) has submitted this project entitled “**Ulpe Dairy** ” For the present semester, this project is carried out under my guidance and supervision and best of my knowledge, this is their original work and has not been presented earlier.

**Place:Kolhapur**

**Date: 30/03/2021**

  
**Mrs. Megha Patil**

(Guide)

  
**Mr. V. B. Pujari**

(HOD)  
DEPARTMENT OF B. C. A.  
VIVEKANAND COLLEGE, KOLHAPUR  
(AUTONOMOUS)

**Examiner:**

1) 

2) 

**Declaration**

We the undersigned hereby declare that this report entitled “**ULPE DAIRY** ” is are original work prepared under the guidance of Mrs. Megha. Patil.

In this project, reports are based on data collected by the our self. We declare that, we have referred the books given in the bibliography for the creation of the project work and have not copied any written material. We understand that any such copy is liable to be punished in any way, the college authorities deemed to fit.

Place: Kolhapur

Date : **30/03/2021**

Yours Faithfully ,

1. Miss. Namrata A. Warke.



2. Miss. Yugandhara R. Ingawale.



## **Acknowledgement**

It is our great pleasure that we submitted the project entitled “**ULPE DAIRY**” We are thankfully acknowledged the endless help and support that we have obtained from **Mr.V.B.Pujari** ( HOD of BCA) from the stage the project was conceived. The journey of this project was possible due to our project guide “**Mrs. Megha Patil**” for giving us valuable guidance for the completion of the project. Last but not least, we would like to express our sincere gratitude to those who have helped directly or indirectly in our project.

**Place: Kolhapur**

## INDEX

Sr. No.	Contents
1.	<b>Introduction to Ecoware System</b> <ul style="list-style-type: none"><li>• Introduction</li><li>• Existing system</li><li>• Need and scope of computer system</li></ul>
2.	<b>Proposed system</b> <ul style="list-style-type: none"><li>• Objectives</li><li>• Requirement gathering</li></ul>
3.	<b>System Analysis</b> <ul style="list-style-type: none"><li>• DFD</li><li>• ERD</li></ul>
4.	<b>System Design</b> <ul style="list-style-type: none"><li>• Database Design</li><li>• Input Design</li><li>• Output Design</li></ul>
5.	<b>Implementation</b> <ul style="list-style-type: none"><li>• System Requirement</li><li>• Hardware / Software</li></ul>
6.	<b>Output</b>
7	<b>Conclusion &amp; Suggestions</b> <ul style="list-style-type: none"><li>• Conclusion</li><li>• Limitation</li><li>• Suggestions</li></ul>
8.	<b>Reference/ Bibliography</b> <ul style="list-style-type: none"><li>• Books</li><li>• Journals</li><li>• Newspapers</li><li>• Web</li></ul>

# Introduction of project

## INTRODUCTION:

Ulape Dairy is one of the popular dairy in bawada area. They sell different Quality dairy products to customers. On several Occasions,customers from different locations come & purchase products as per their need

## EXISTING SYSTEM:

At Present, dairy outlet manages all activities such as product order and billing through several registers manually. They order products and store details in order registers. The sell details are also stored in sell registers. Initially the order is given to sypllier & details are recorded in order register, supplier send products which is recorded in purchase register & stock is updated. When product is stored the details are recorded in sell register & stock is updated to manage all such details using several register is having following disadvantages :

- Lot of space required to store data
- Data can be lost due to water fire dust mice etc.
- There are Chances if miscalculations in truncation.
- Lot of time requires to search required info.
- Creating Reports is a tedious & time Consuming process
- Data cantn be safe & secure as anyone can access register.

## **Need and Scope of Computer System**

### **Need:**

The Computer system is widest scope of performing different transaction to check various data, records for the system. All records or data maintain easy and very fast. No need of more people. No need of paper work. Everything can be easily handled. Data can be easily added or removed. Therefore, Computer system is more preferable than manual system.

### **Scope:**

In this system there is widest scope of performing different transaction to check various data validation required for stock and billing. This system is useful to check any information about various **Order**, **Purchase** and **Billing** activities, like maintain add new Entry, update entries.

- **Large Data Storage:** We can store large amount of data. Once the data is stored, we can retrieve it as many number of times.
- **Easy Search:** Searching any specific record becomes easier. Hence, there is no need to check the registers for verifying the details.
- **Reports:** Fetching reports becomes easy and printouts of the reports can easily be taken.
- **Cost Factor:** Due to computerization, extra man-power for keeping records is not needed.

# Proposed System

## Objectives :

The objective of our System is to help owner to manage and keep track of activities related to order, purchase and sell of light products efficiently so that profit can be made from system. Owner can get instance status about order status, daily sell and stock details which helps him to take useful decisions:

To solve problem in manual System we proposed computerized system. Our System will use C# as front end to create attractive and use friendly interface. We design different forms to accept data from user and to show results. Similarly, we use MS-Access to store data of customer related to system. We will create different tables to store data of Customer, order, Supplier, Buying, Selling etc. We write Program to process that data and generate reports. Our system has following advantages over manual system.

## Advantages :

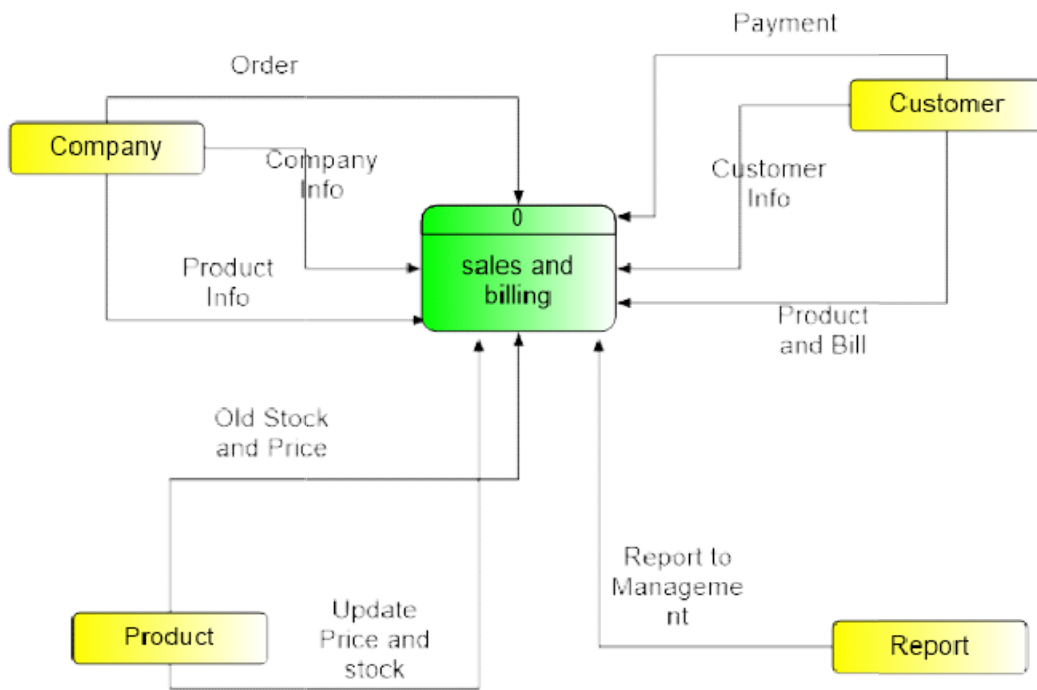
- Requires less space to store large data, as data is stored in Hard Disk.
- Searching of information is easy and faster.
- Calculations are accurate.
- Data is not safe and secured as, anyone can see and change in register.
- Several registers need to be referred to prepare report.

Data in registers can be lost due to water, fire and dust etc.

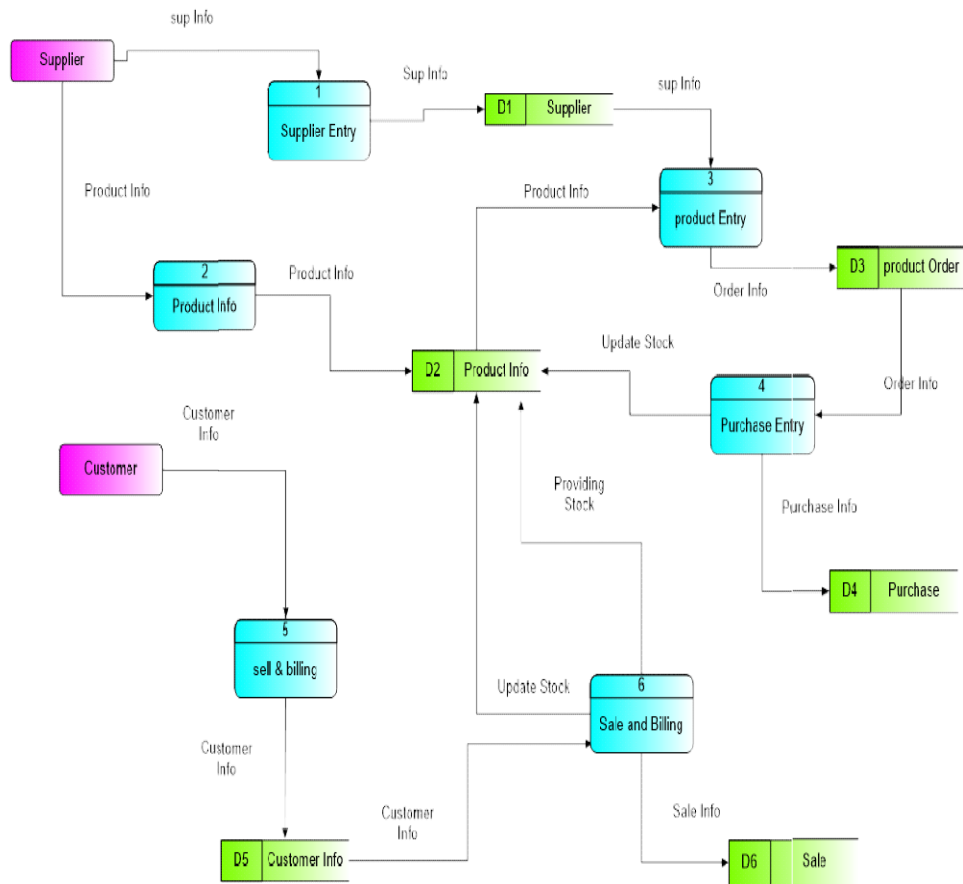


# System Analysis

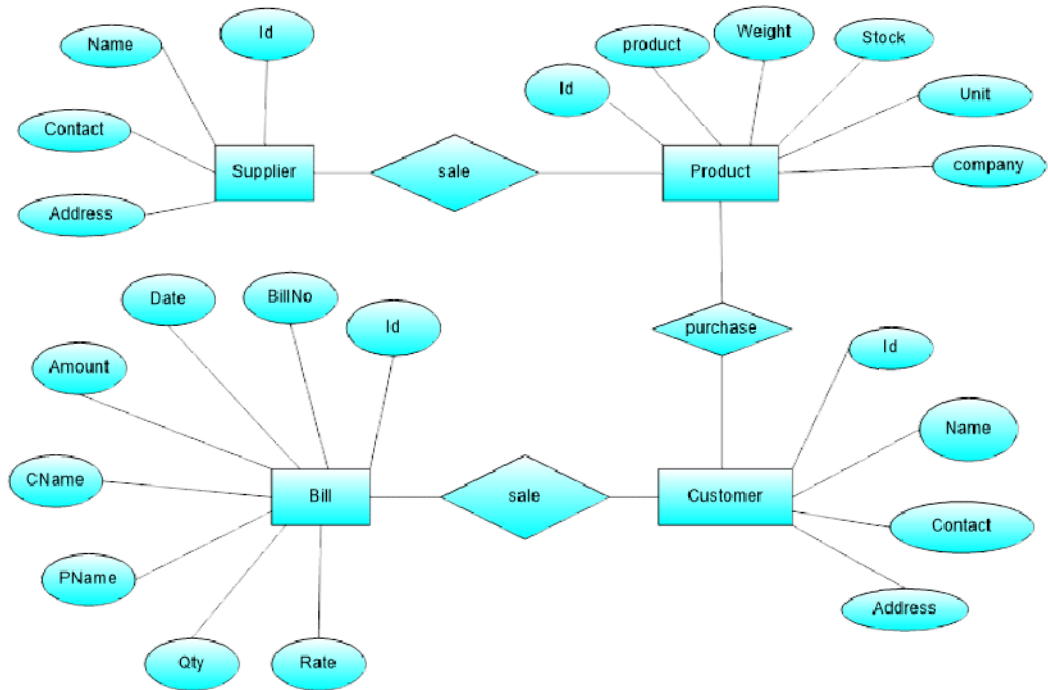
## 1) 0LevelDiagrams(DFD)



## 2) Context Level Diagram (DFD)



### 3) Entity Relationship Diagram (ERD)



## Database design:

For this project, all tables are stored in single filled name 'Ecoware System'. In this, we have following tables:

### 1. Supplier Entry :

Field Name	Data Type	Size	Constraint
ID	Number	Integer	Primary Key
Name	Text	30	
Address	Text	150	
Contact	Text	10	
Email	Text	50	

### 2. Product Entry

Field Name	Data Type	Size	Constraint
ID	Number	Integer	Primary Key
PName	Text	50	
Company	Text	50	
Unit	Text	2	
Weight	Number	Integer	
Stock	Number	Integer	
Price	Number	Integer	
MUnit	Text	5	

### 3. Supplier Order Entry

Field Name	Data Type	Size	Constraint
ID	Number	Integer	Primary Key
OrderNO	Number	Long Integer	
Order Date	Date/Time	Short Date	
SName	Text	50	
PName	Text	50	
Weight	Number	Long Integer	
Quantity	Number	Integer	
Status	Text	8	
Unit	Text	5	
MUnit	Text	6	

### 4. Purchase

Field Name	Data Type	Size	Constraint
ID	Number	Integer	Primary Key
Pdate	Date/Time	Short date	
SName	Text	50	
pName	Text	Text	
Quantity	Number	Integer	
Weight	Number	Long Integer	
Rate	Number	Integer	
Amt	Number	8	
Invno. no	Number	5	
MUnit	Text	6	
Unit	Text	5	

### 5. Billing Table :

Field Name	Data Type	Size	Constraint
ID	Number	Integer	Primary Key
Bill N0	Number	Long Integer	
BDate	Date/Time	Short Date	
CName	Text	50	
PName	Text	50	
Weight	Number	Long Integer	
Quantity	Number	Integer	
Rate	Number	Integer	
Amt	Number	Integer	

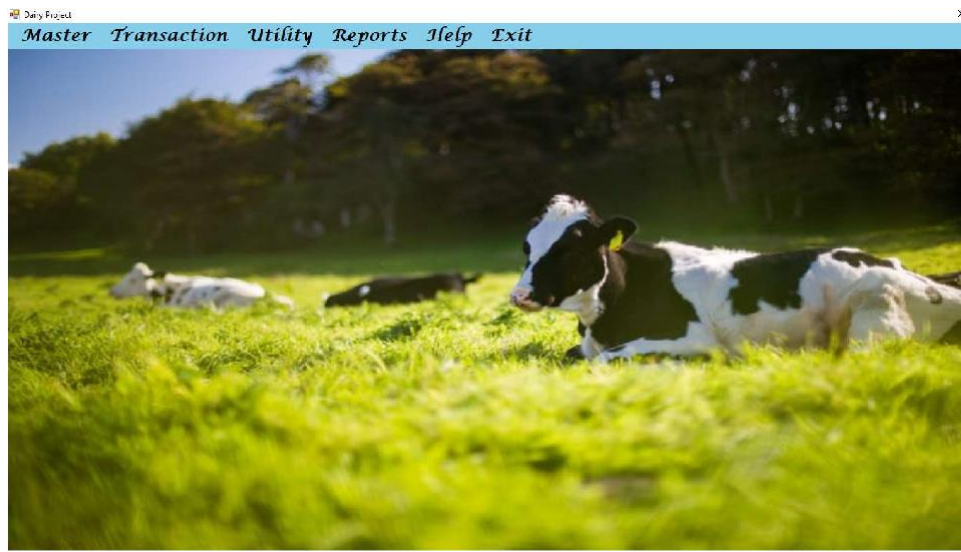
## Input Design:

### Login Form:



A login form is displayed on a blue textured background. It features two input fields: "User name" with the text "admin" entered, and "Password" with six dots representing masked characters. Below the fields are two buttons: "OK" and "Cancel". The form is overlaid on a photograph of dairy products like butter and cheese.

### Menu Form :



## Master Form:

Supplier

Entry

:

Dairy Project- Supplier Entry

### Supplier Entry

ID	1
Name	Gokul Pvt Ltd
Address	Gokul Shirgaon MIDC, Kolhapur.
Contact	9984212572
E Mail	gokul@gmail.com

**Update** **Cancel** **Delete** **Exit**

Enter ID To Search 1 **Search**

Product Entry :

### PRODUCT ENTRY

ID	1
Company	Gokul
Product	paneer
Unit	pouch
Weight	250 gm
stock	0
Price	60

**Add** **Edit** **Delete** **Exit**

Enter ID to search 0 **Search**



## Transaction Form:

### Supplier Order Entry

Supplier Order

### SUPPLIER ORDER ENTRY

Order No: 6 Date: 1/15/2020

Supplier Name: Gokul Pvt Ltd

Product Name: Butter milk

Weight: 500 ml

Quantity: 0 Pouch

Stock: 0

Status: New

Add Item

Product	Weight	Qty
---------	--------	-----

New Order Cancel Exit

## Bill Entry:

### BILL ENTRY

BillNo: 1 Date: 15/2/20

Customer Name: Sachin patil

Company: Gokul

Product: Milk

Weight:

Qty: 2

Rate: 27

Amount: 54

Add Item

Company	Product
---------	---------

New Bill Cancel Exit

## Purchase Entry:

**PURCHASE ENTRY**

InvoiceNo	<input type="text" value="1"/>	Order No	<input type="text" value=""/>	Date	15/1/2020
Supplier Name	Gokul				

Product	Shrikhand		
Quantity	<input type="text" value="3"/>	Weight	<input type="text" value="250 gm"/>
Rate	<input type="text" value="40"/>		
Amount	<input type="text" value="120"/>	<input type="button" value="Add Item"/>	

Product	Qty	weight

< >

<input type="button" value="New Bill"/>	<input type="button" value="Cancel"/>	<input type="button" value="Exit"/>	<b>Total Amount</b>	<input type="text" value="0"/>
---	---------------------------------------	-------------------------------------	---------------------	--------------------------------

## Reports:

Ulpe Dairy Tarabai Park ,Kolhapur				
Product Report				
Date	15-02-2020			
CName	Gokul Pvt Ltd			
PName	Unit	Weight	Stock	Price
Milk	ml	500	0	27

Ulpe Dairy Tarabai Park ,Kolhapur				
Supplier Order Report				
Date :	15-02-2020			
Order No :	1	Date :	03/10/2020	
Supplier :	Gokul Pvt Ltd			
Product Name	Weight	Qty	Status	
Butter milk	500	10	Finished	
Curd	200	10	Finished	
Ghee	500	5	Finished	

Ulpe Dairy Tarabai Park ,Kolhapur				
Supplier Report				
Date :	15-02-2020			
NAME	ADDRESS	CONTACT	E-Mail	
Gokul Pvt Ltd	Gokul Shrigaon MIDC, Kolhapur.	9684212572	gokul@gmail.com	
Wama Sankul	Near Tatyasaheb Dental College,Wamanagar,Kolhapur.	9125451235	wama@abu.com	
Ulpe Dairy	Tarabai Park , Kolhapur.	9057760789	ulpe@yahoo.com	

# IMPLEMENTATION

## **System Requirements:**

This Management system can be used in windows 2008 supported for other platform such as applet, macintosh.

The system must be running windows 2008 or next operating systems like.

Windows 2008

Windows 2010

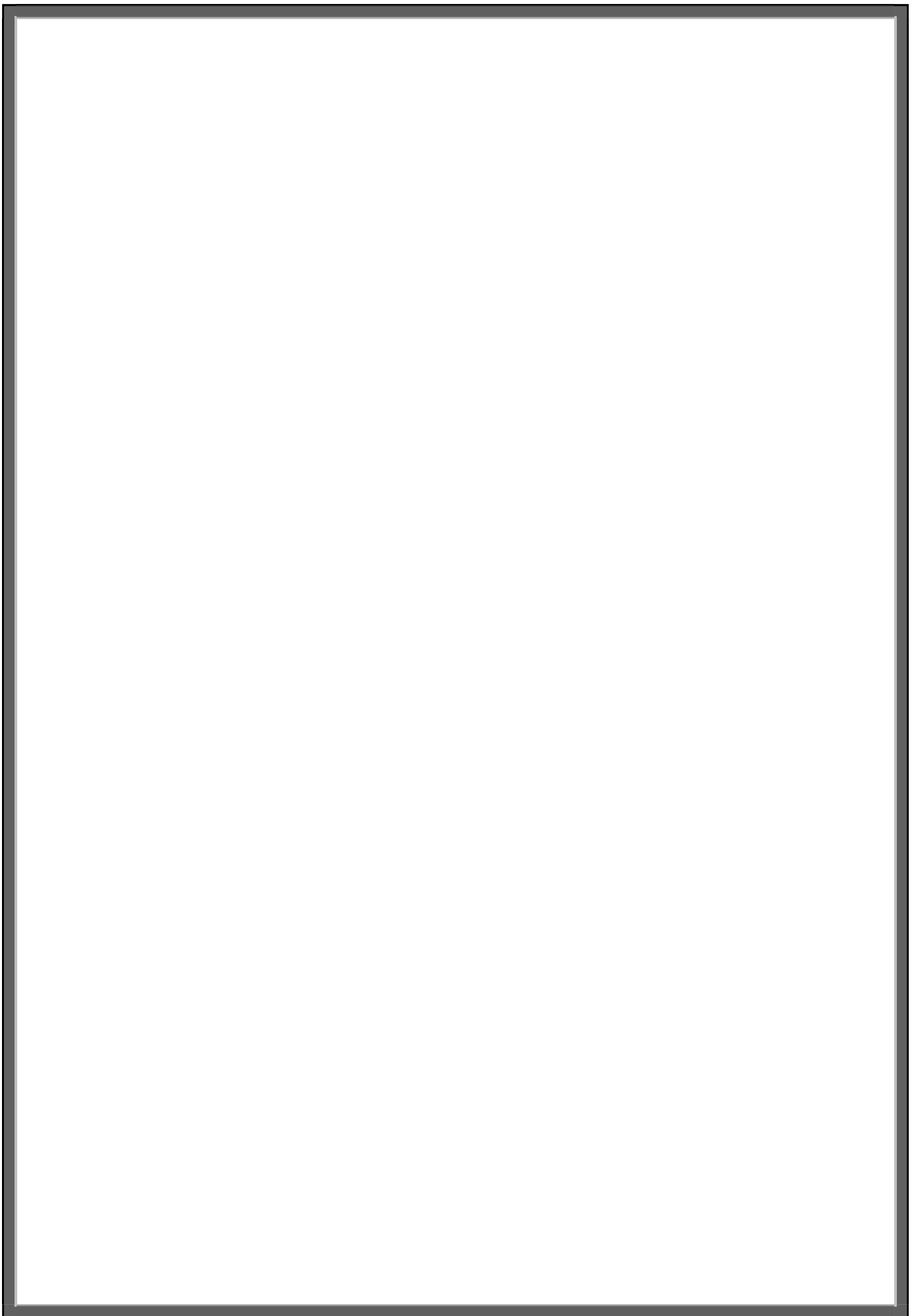
And also supports next upcoming windows.

## **Hardware Specification**

- **Processor:** Any processor with speed 1.06Hz or above
- **RAM:**2GB RAM or above
- **HardDisk:** Minimum 2GB free Space available

## **Software Specification:**

- **Operating System** – Windows XP, Windows 7 or  
Latest version.
- **Front End** – Visual Basic. Net (2005/2008)
- **Back End** – Microsoft Access (2003 / 2007)



## **Front End:-**

### **About Visual Studio 2008**

.NET is the Microsoft web service strategy to connect information, people & device through software. Integrated across the Microsoft platform, .NET technology provides the ability to quickly build, deploy, manage & user connected solutions enable businesses to integrate their systems more rapidly & in more agile manner & help they realize the promise of information anytime, anywhere, on any device. The Microsoft platform includes everything a business needs to develop & deploy a web service-connected IT architecture: servers to host web services, development tools to create them, applications to use them & a worldwide network of more than 35000 Microsoft certified partner organizations to provide any help you need.

### **Introduction to .Net Framework-**

.NET is the framework for which we develop applications. It sits in between our application programs and operating system. Applications developed for .NET run inside .net and are controlled by .net. It supports both windows and web applications.

.NET provides an object oriented environment. It ensures safe execution of the code by performing required runtime validations. For example, it is never possible to access an element of an array outside the boundary. Similarly, it is not possible to a program to write into another programs area etc. The runtime validations performed by .net makes the entire environment robust.

### **NET framework main components-**

#### **1) Common Language Runtime:**

The common language runtime (**CLR**) is the environment where all programs in .Net are run. It provides various services, like memory management and thread management. Programs that run in the CLR need not manage memory, as it is completely taken care of by the CLR.

All programs targeted to .Net are converted to MSIL (Microsoft intermediate language). MSIL is then converted to native code by JIT (just in time compiler) of the CLR and then native code is run by CLR.

As every program is ultimately converted to MSIL in.net, the choice of language is pure personal. A program is pure personal. Program written in VB.NET and a program written in C# are both converted to MSIL. Then MSIL is converted to native code and run. So whether you write program in C# or VB.NET at the end it is MSIL.

### **1) .NET Class Library:**

.Net comes with thousands of classes to perform all important and not-so-important operations. Its library is completely objecting oriented, providing around 5000 classes to perform just about everything. The following are the main areas that are converted by class library.

1. Data structures
2. IO management
3. Windows and web controls
4. Data base access
5. Multithreading

The above list is comprehensive and only to provide you an instant idea.

### **Features of .NET:**

The following are major features of .NET. We will use these features throughout journey. Here is just a brief introduction to all key features of .NET.

### **1. Powerful Windows Based Applications:**

Visual basic .Net comes with features such as a powerful new forms designer, an in-place menu editor and automatic control anchoring &docking. Visual basic.Net delivers new productivity features for building more robust applications easily &quickly. With an improved integrated development environment(IDE) and a significantly reduced startup time, visual basic.Net offers fast, automatic formatting of code as you type,

improved intelligence, an enhanced object browser & XML designer & much more.

## **2) Building Web Based Applications:**

With visual basic.Net we can build applications more rapidly & deploy & maintain them with efficiency. Visual basic .Net 2003 & .net framework1.1 makes "DLL Hell" thing of the past. Side by side versioning enables multiple versions of the same component XCOPY development & web auto download of windows based application combine the simplicity of web page deployment & maintenance with the power of rich, responsive windows based applications.

## **3) Simplified Deployment:**

With Visual Basic .NET we can build application more rapidly & deploy & maintain them with efficiency. Visual Basic .NET 2003 & .net framework makes "DLL Hell" a thing of the past. Side-by-side versioning enables multiple version of the same component. XCOPY deployment & web auto download of windows based application combine the simplicity of web page deployment & maintenance with the power of rich, responsive windows based applications

## **4) Powerful, Flexible, Simplified Data Access:**

You can tackle any data access scenario easily with ADO.NET & ADO data access. The flexibility of ADO.NET enables data binding to any database, as well as classes, collections & arrays & provides true XML representation of data. Seamless access to ADO enables simple data access for connected data binding scenarios. Using ADO.NET, Visual Basic .NET can gain high-speed access to MS SQL server, oracle, DB2, Microsoft access & more.

## **5) Improved Coding:**

You can code faster & more effectively. A multitude of enhancements to the code editor, including enhanced intelligence, smart listing of code for greater readability & a background compiler for real time notification of



syntax errors transforms into a Rapid Application Development (RAD) coding machine.

#### **6) Direct access to the platforms:**

Visual Basic Developers can have full access to the capabilities available in .NET framework 1.1 developers can easily program system services including the event log, performance, counters & file systems. The new window service project template enables to build real Microsoft Windows NT services. Programming against services & creating new window services is not available in Visual Basic .NET standard; it requires Visual Studio 2003 professional or higher.

#### **7) Full object – oriented constructs:**

You can create reusable, enterprise – class, code using full object oriented constructs. Language features include full implementation inheritance, encapsulation & polymorphism. Structure exception handling provides a global error handler.

## **About Microsoft Office Access (Back End):**

**Microsoft Office Access** previously has known as **Microsoft Access** is a relational database management system from Microsoft that combines the relational Microsoft Jet Database Engine with a graphical user interface and software-development tools. It is a member of the Microsoft Office suite of applications, included in the Professional and higher editions or sold separately. In May 12 2010, the current version of Microsoft Access 2010 was released by Microsoft in Office 2010; Microsoft Office Access 2007 was the prior version.

MS Access stores data in its own format based on the Access Jet Database Engine. It can also import or link directly to data stored in other applications and databases

Software developers and data architects can use Microsoft Access to develop application software, and "power users" can use it to build simple applications. Like other Office applications, Access is supported by Visual Basic for Applications, an object-oriented programming language that can reference a variety of objects including DAO (Data Access Objects), ActiveX Data Objects, and many other ActiveX components. Visual objects used in forms and reports expose their methods and properties in the VBA programming environment, and VBA code modules may declare and call Windows operating-system functions.

Access tables support a variety of standard field types, indices, and referential integrity. Access also includes a query interface, forms to display and enter data, and reports for printing. The underlying Jet database, which contains these objects, is multiuser-aware and handles record-locking and referential integrity including cascading updates and deletes.

Repetitive tasks can be automated through macros with point-and-click options. Microsoft Access is popular among non-programmers and professional developers alike. Non-programmers can create visually pleasing and relatively advanced solutions with very little or no code. It is also easy to place a database on a network and have multiple users share and update data without overwriting each other's work. Data is locked at the record level which is significantly different from Excel which locks the entire spreadsheet.

Microsoft offers a wide range of template databases within the program and for download from their website. These options are available upon starting Access and allow users to enhance a database with pre-defined tables, queries, forms, reports etc.

**Features of Access-**

- Works on the internet and intranet.
- Works on other application.
- Working with data.
- Working with filters.
- Designing a database.
- Creating and customizing tables.
- Creating and customizing query.
- Programming with visual basic.
- Securing and administrating database.

## Crystal Report:

Crystal Reports is a business intelligence application used to design and generate reports from a wide range of data sources. Several other applications, such as Microsoft Visual Studio, bundle an OEM version of Crystal Reports as a general purpose reporting tool.

Crystal reports are powerful software generating different types of reports. It supports complex reports including cross-tab & sub reports. Using Crystal reports we can insert pictures & different types of charts in the report. Report can be customizing as per needs. We can perform different types of operations such as sorting, selecting particular records, etc.

With Crystal Reports for Visual Studio .NET, you can quickly create complex and professional-looking to create and format the report you need. The powerful Report Engine processes the formatting, grouping, and charting criteria you specify. Crystal Reports for Visual Studio.NET provides developers with data visualization and analysis capabilities through seamless integration within all the Visual Studio languages targeting .NET.

Crystal Reports allows users to graphically design data connections and report layout. In the Database Expert, users can select and link tables from a wide variety of data sources, including Microsoft Excel spreadsheets, Oracle databases, Business Objects Enterprise business views, and local file system information. Fields from these tables can be placed on the report design surface, and can also be used in custom formulas, using either BASIC or Crystal's own syntax, which is then placed on the design surface. Formulas can be evaluated at several phases during report generation as specified by the developer.

## **User Guidelines**

In order to access to the system, you will have to log in the account with **User-Id** and **Password**. You are solely responsible for the activity that occurs on your account and you must keep your account password secure.

### **Guidelines:**

First, the admin has to log in with his User-Id and Password. If both user-id and password are correct, he will have access to the MDI page of the system. Unsuccessful log in attempts will disable your account.

Once, you have accessed to the MDI parent form, you can view various

Food Management forms related to the system. Under Master form, you will see menu items like Distributor Entry, Supplier Entry, and Employee Entry and Product information.

Under Transaction Distributor Order, Supplier Order, Purchase, Production and Billing are present.

Fill in the details accordingly.

To AddRecord Add button is used and to save Records Save Button is used. To close the form Exit Button is need to click.

The same process is carried out for all the forms. You can view the repair-history-view of any car which is serviced at your station.

In master respective student name has to be selected; the rest will be automatically done.

In the REPORTS section, reports for all invoices are maintained. There are various reports available. The most important is the one which displays the Production Details and Billing Details.

### **Permissions and Restrictions:**

1. You agree not to alter or modify any part of the system
2. You agree not to use any unauthorized means to access the system

# Output

## Conclusion and Suggestions

### Conclusion:

- 1) By using this software, we will also be able to maintain security & integrity of their data.
- 2) They can also maintain daily transactions by using this software.
- 3) Our main goal is to reduce complexity in billing and to reduce the burden on staff members.
- 4) Saving of time, reducing overheads.
- 5) By using this software, it is possible to handle and store large records in a small size.

### Suggestion:

Little introduction and short training related to this system can result in the completion of work more efficiently.

### Limitation:

- Several registers are needed to store data, which takes more space.
- Searching for information within several registers is a time-consuming process.
- Due to manual calculation, wrong data can be stored.
- Data is not safe and secured as anyone can see and change in the register.
- Several registers need to be referred to prepare a report.
- Data in registers can be lost due to water, fire, and dust, etc.

## Bibliography

- ✓ Visual Basic (Black Book)  
-Steve Holzner
  
- ✓ Software Engineering  
-Pankaj Jalote
  
- ✓ System Analysis and Design  
-Award F.H
  
- ✓ [www.Codeproject.com](http://www.Codeproject.com)